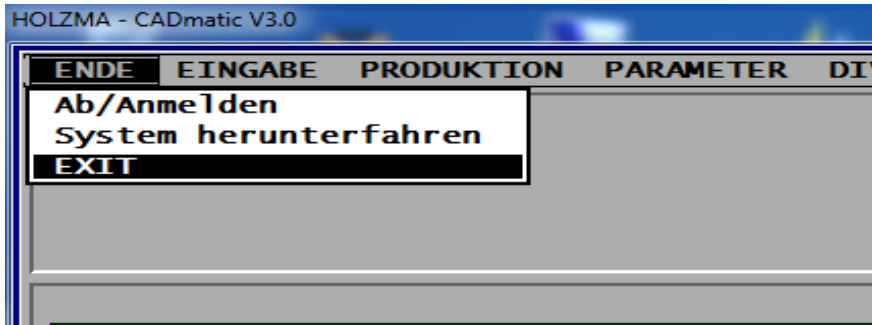
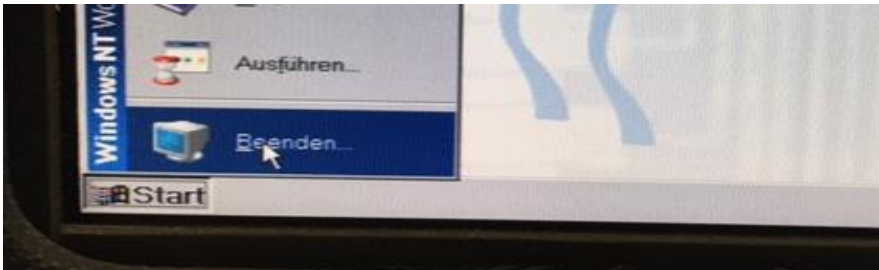


Windows NT Benutzerumschaltung

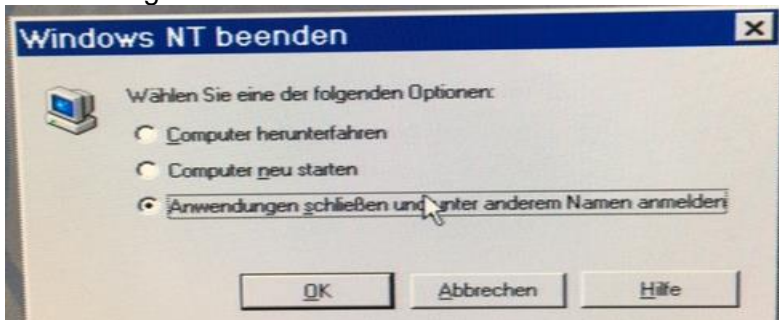
1. Cadmatic 3 beenden



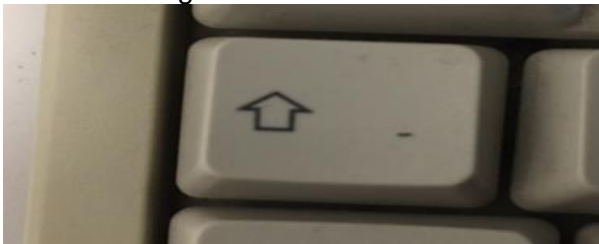
2. Windows beenden



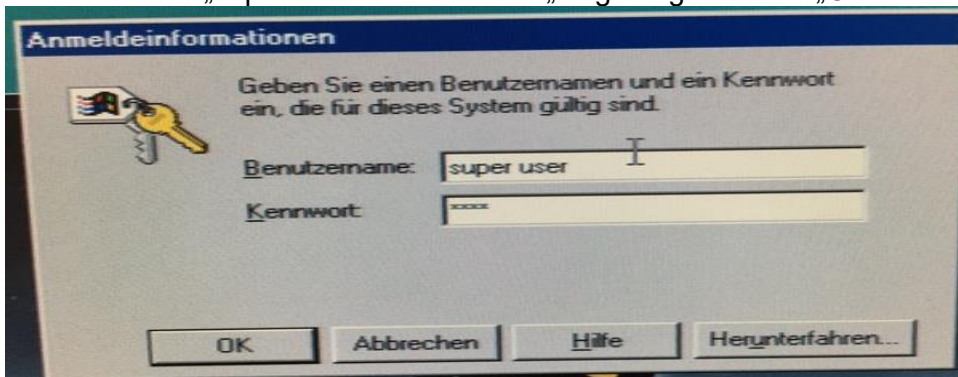
3. Anwendungen schliessen und unter anderem Namen anmelden



4. SHIFT Taste gedrückt halten bis Windows Anmeldefenster angezeigt wird

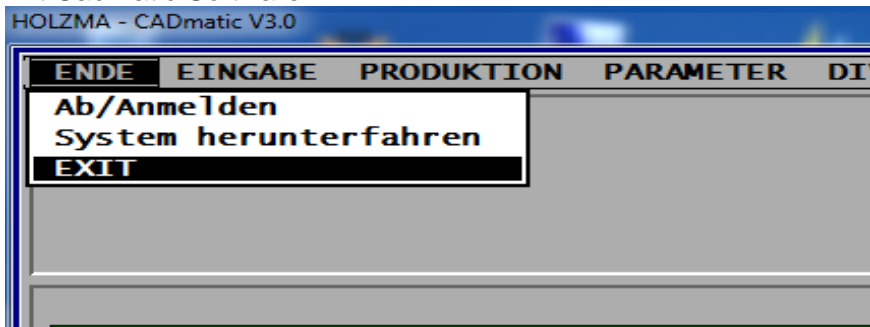


5. Benutzername „super user“ mit Passwort „diag“ eingeben und „OK“ anwählen

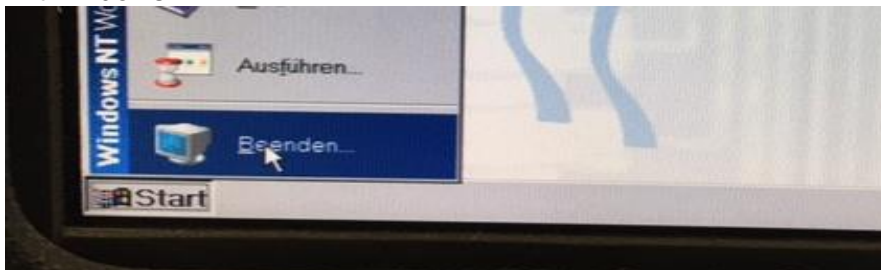


Windows NT User switching

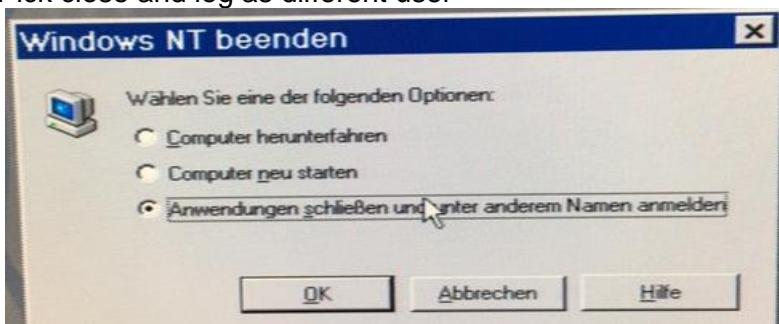
1. Exit Cadmatic Software



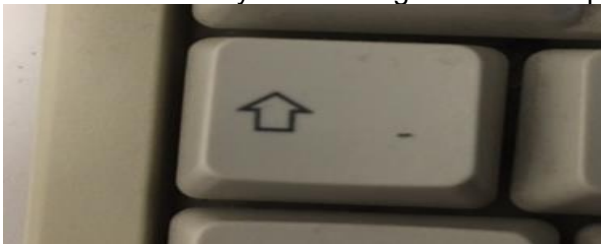
2. Exit windows



3. Pick close and log as different user



4. Hold the SHIFT key until the log on Window appears



5. Username „super user“ Password „diag“ an select „OK“

